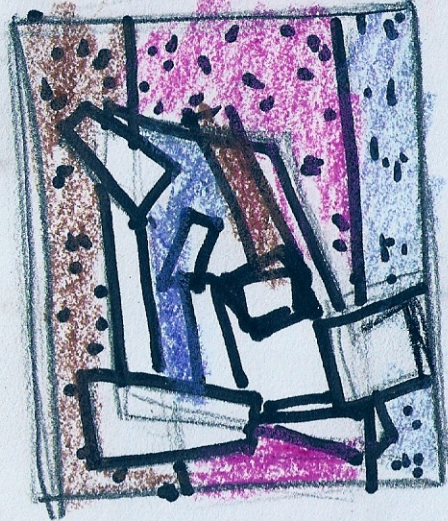
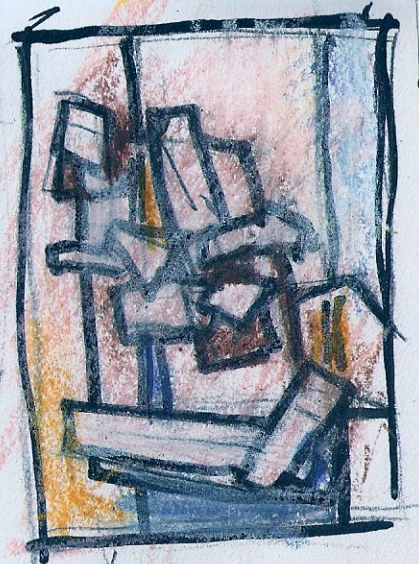


Contrained - Art focus

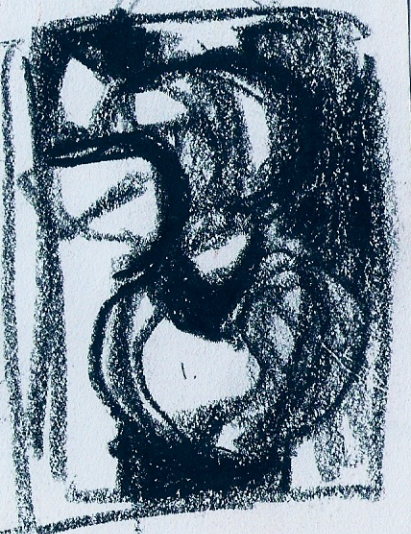
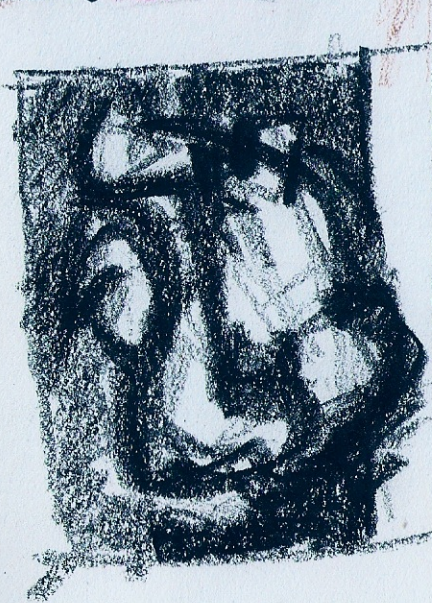
Solving problem based
on learned formulas (systems)
overlayed with need to be
original - creative - still based
on systems.

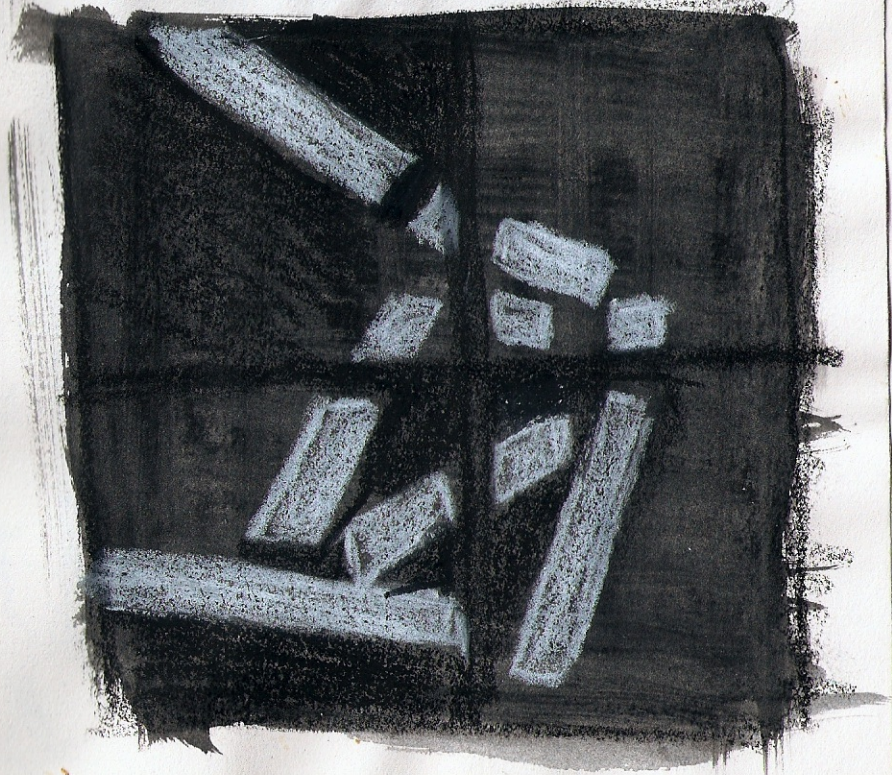
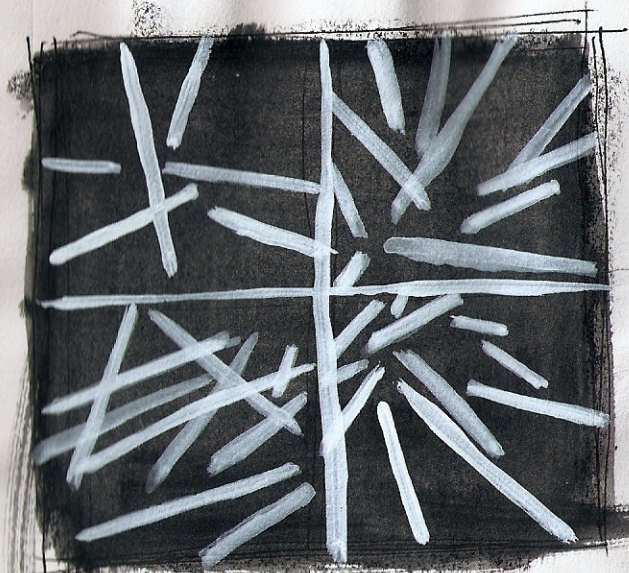
not much imagination
no heart - emotion

KatharineLafleur@netscape.net



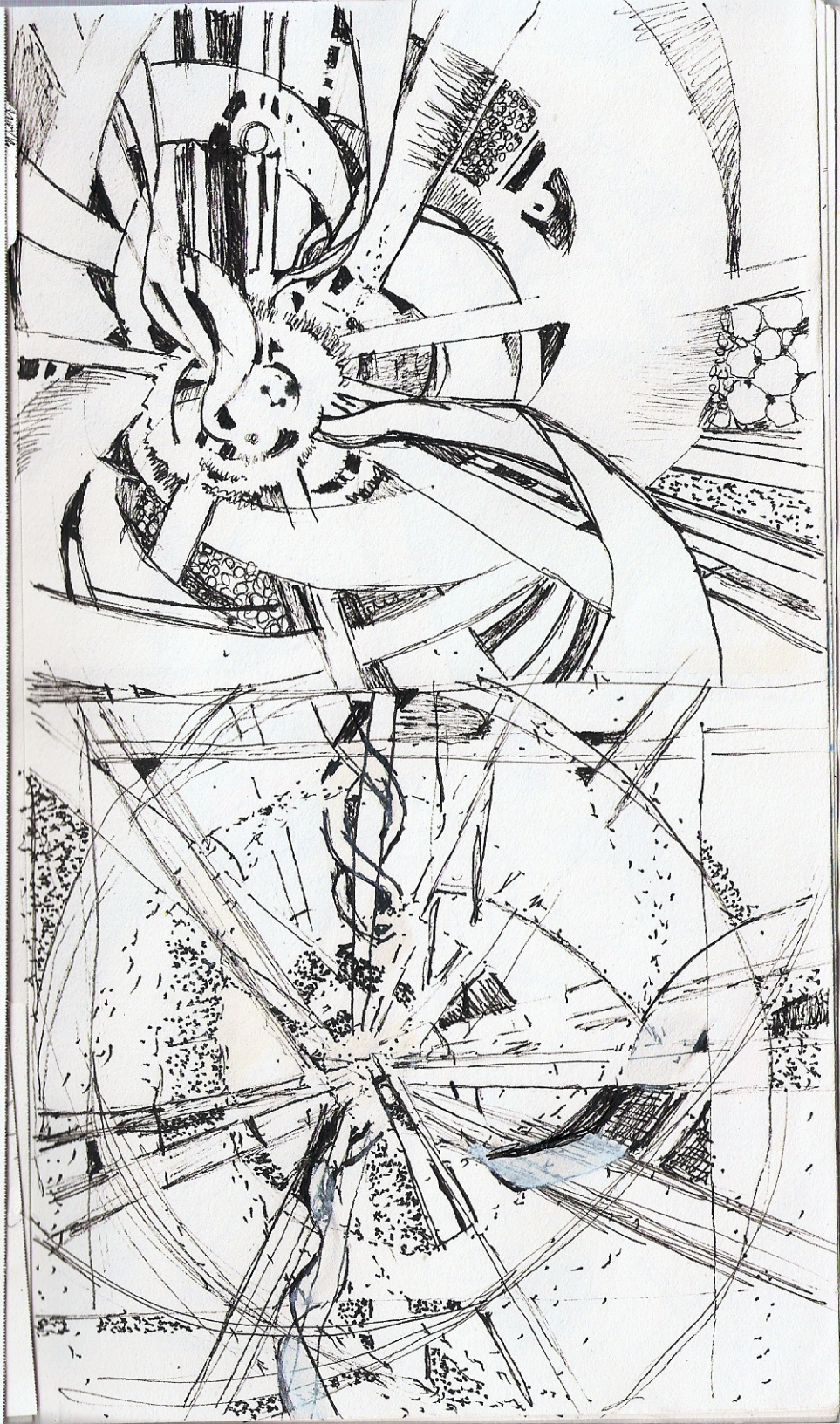
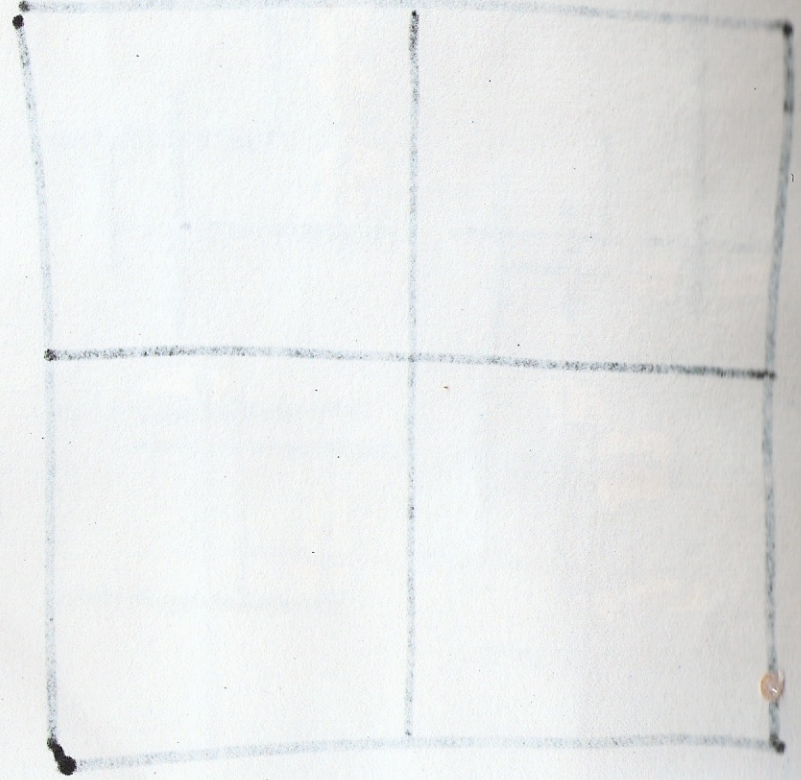
to
6 - Alameda
→ Court -
La Cucina Meyer
N + E of TMA

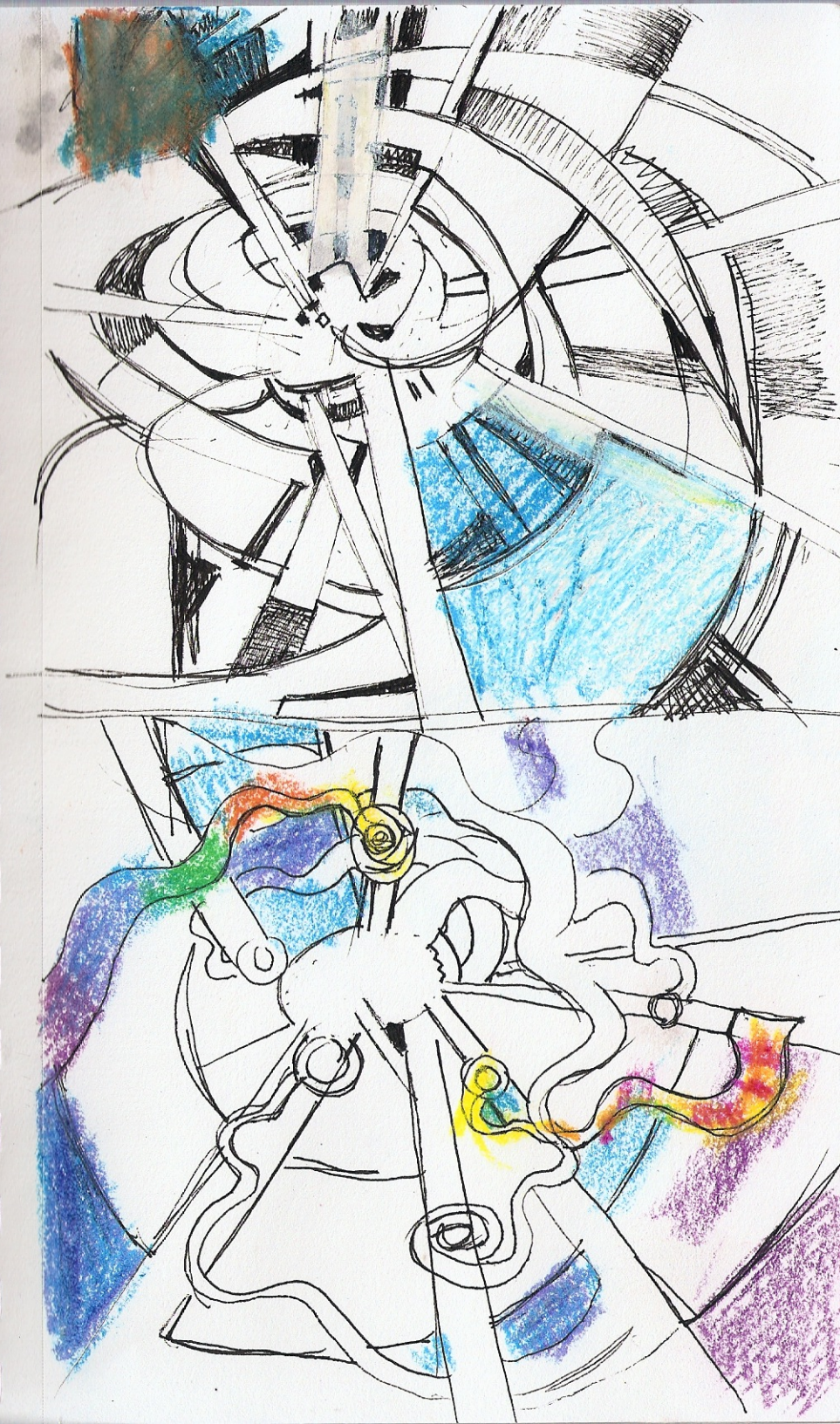






Handwritten Chinese characters in a grid format. The characters are arranged in two columns and four rows. The characters are: 上 (top), 下 (bottom), 中 (middle), and 左 (left).





日	日
月	月
年	年

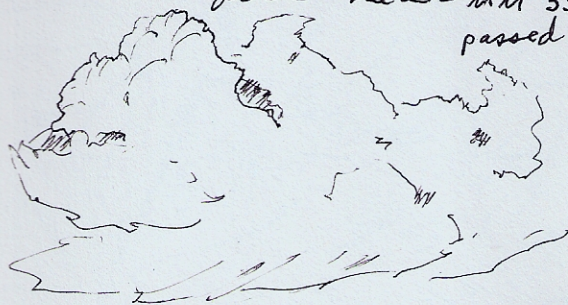
日	日
月	月
年	年

Handwritten marks and scribbles on the left page.

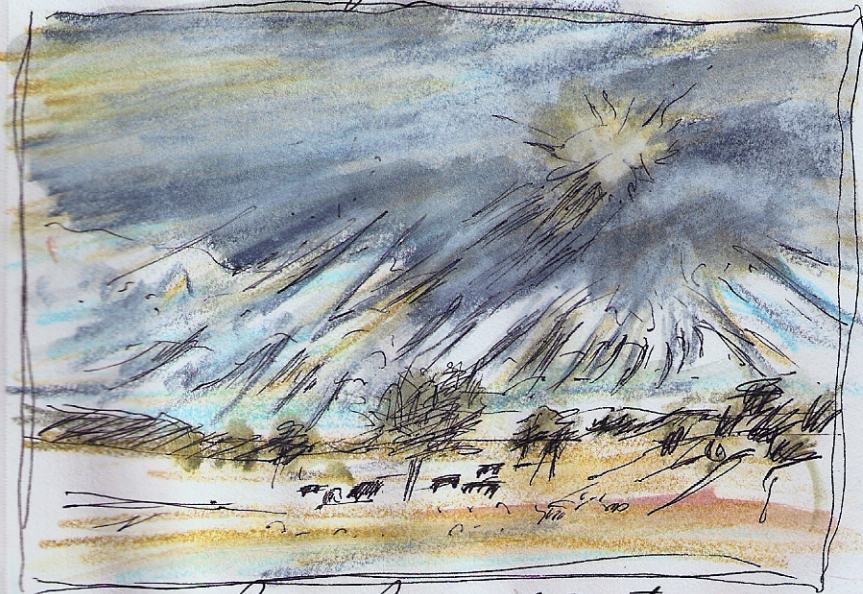
Oct 16 '02 Jan. - 7 Aug.

• Green polka-dot mtow. Salt River Canyon
rest stop 135.4 mi 2 1/2 hrs.

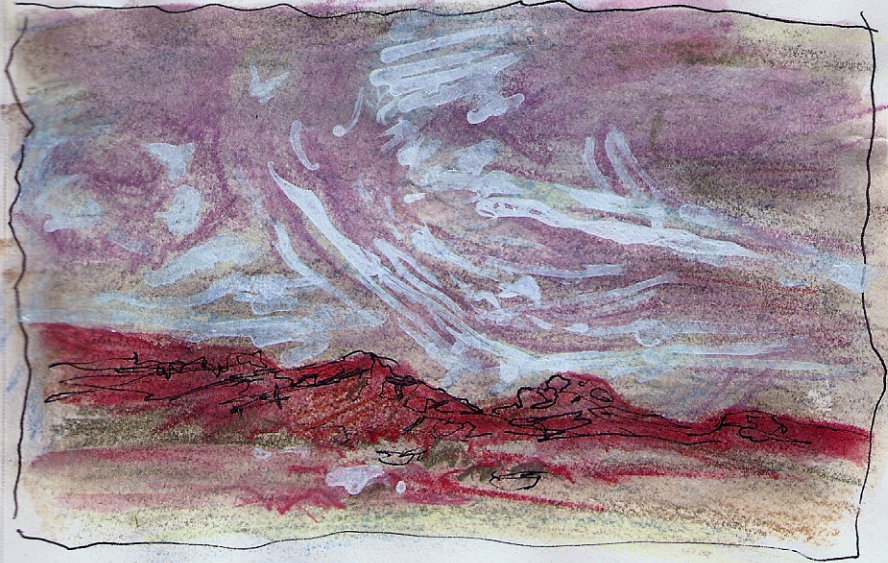
• approaching Shoshone - fire damage visible
+ an active fire near MM 330
passed thru Witch Well
az,



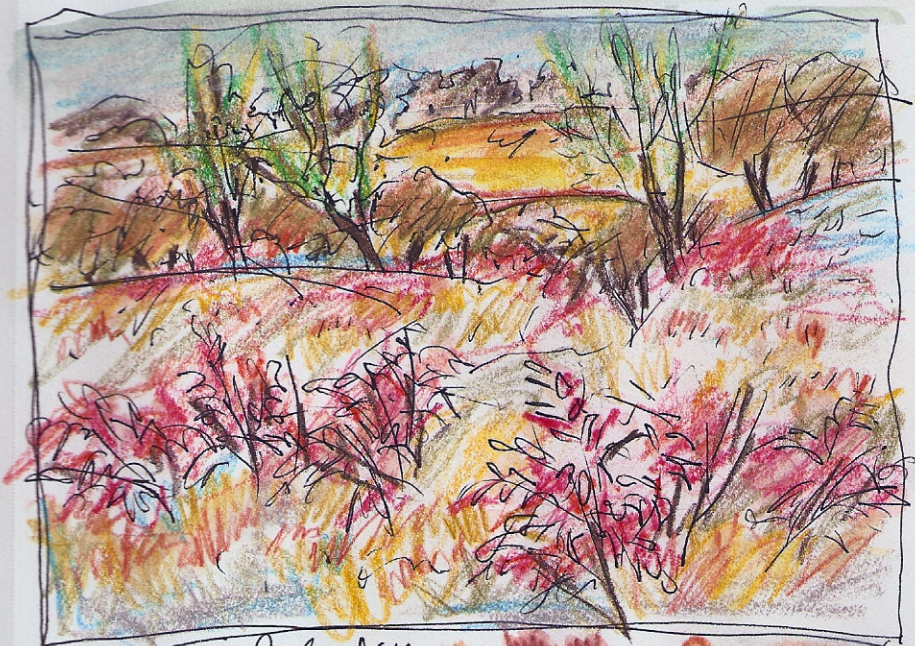
Oct 18 '02 Albany → Eric, Okla



crossed Pecos River at Santa Rosa NM 600 mi from Tucson



Oct 19-02 Erick Okla → Springfield, Mo.
Thick fog - rain, heavy cloud cover + lots of
road construction.



Sumoc in fall color



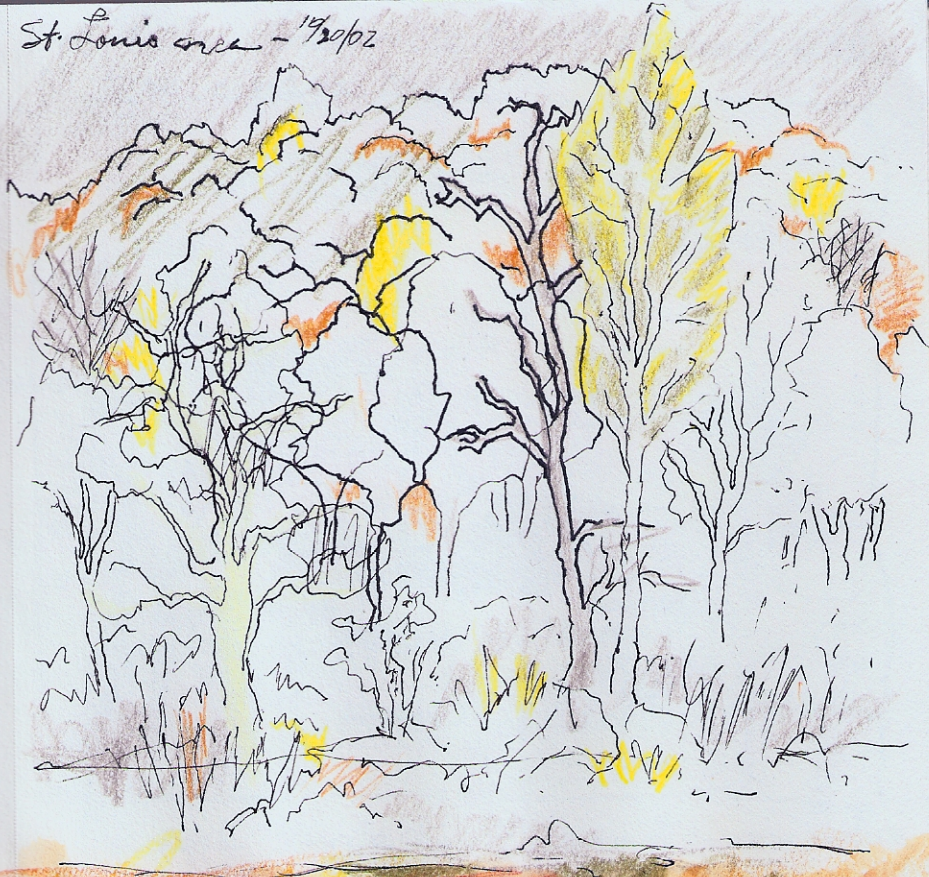
Oct 20, 02 Springfield, Mo → Louisville Ky.



Cows in fog-back-lit pasture - early morning



St. Louis creek - 10/20/02



Oct 20 '02 Louisville, Ky → G. Banks, W. Va
All cows names are Chase



Pink → gold sunrise sky - fluorescent green pasture,
dark-silhouetted barn & cows, & trees



10/21/02



Nov 1 1902 Des Moines → N. Platte Neb.

All cows names are Chase!



Yellow Corn field, Snow in pasture (white) Black Cows, Trees in distance, Gray Sky.

Nov 2 N. Platte → Denver (Fayette/Arada)
Snow carries everything
with a white blanket

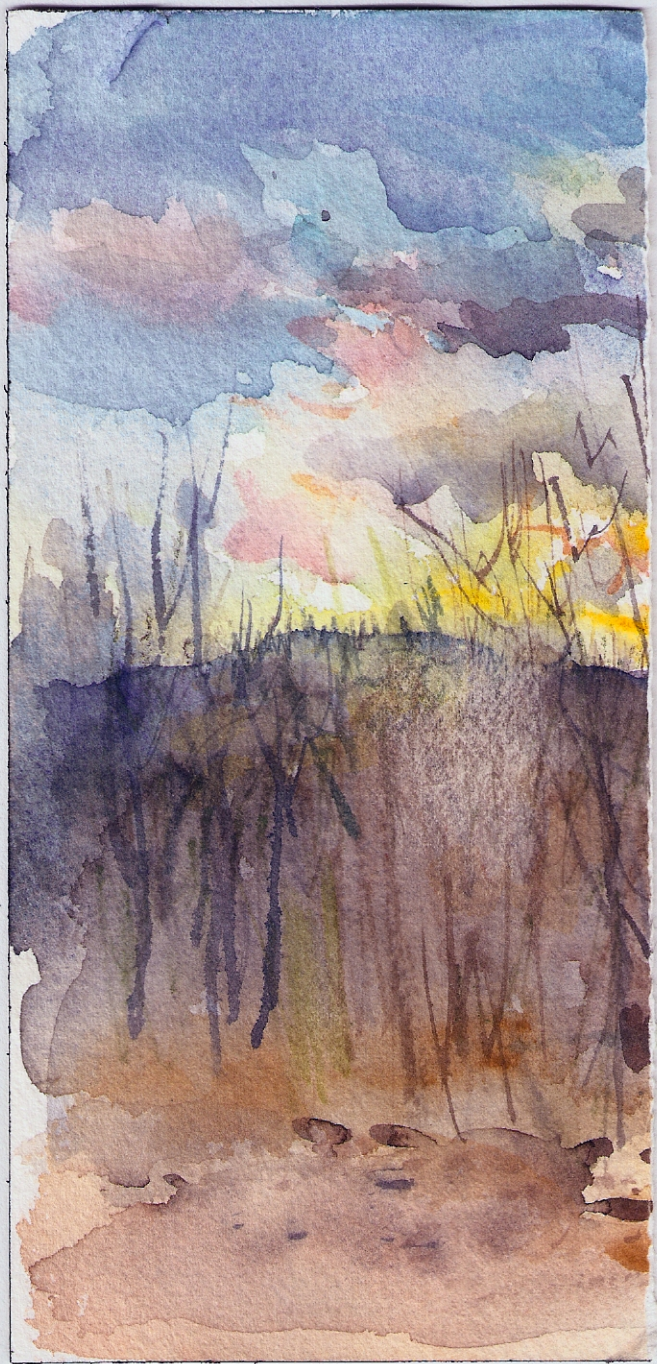


Nov 6 Cedar City → Incehoff





12/6/07 Flagstaff





12/6/07
Fogstaff